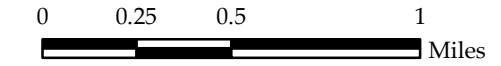


# Kingdom Community Wind Project Lowell, Vermont Watershed Map with Water Quality Stations & 2016 Monitoring

January 20, 2017



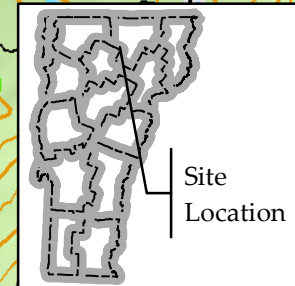
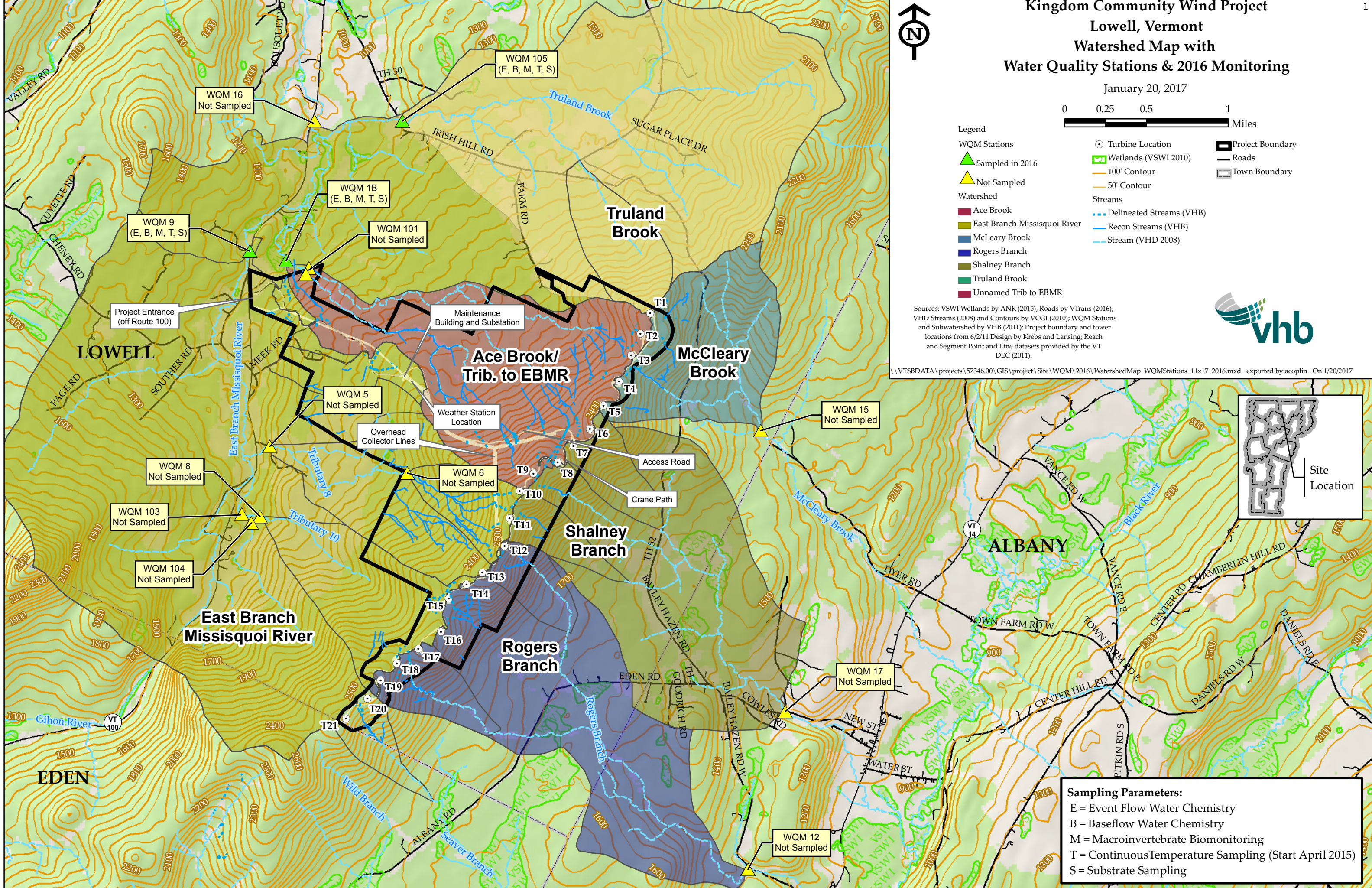
### Legend

- WQM Stations
  - ▲ Sampled in 2016
  - ▲ Not Sampled
- Watershed
  - Ace Brook
  - East Branch Missisquoi River
  - McLeary Brook
  - Rogers Branch
  - Shalney Branch
  - Truland Brook
  - Unnamed Trib to EBMR
- Streams
  - Delineated Streams (VHB)
  - Recon Streams (VHB)
  - Stream (VHD 2008)
- Other
  - Turbine Location
  - Wetlands (VSWI 2010)
  - 100' Contour
  - 50' Contour
  - Project Boundary
  - Roads
  - Town Boundary

Sources: VSWI Wetlands by ANR (2015), Roads by VTrans (2016), VHD Streams (2008) and Contours by VCGI (2010); WQM Stations and Subwatershed by VHB (2011); Project boundary and tower locations from 6/2/11 Design by Krebs and Lansing; Reach and Segment Point and Line datasets provided by the VT DEC (2011).



\\VTSBDATA\projects\57346.00\GIS\project\Site\WQM\2016\WatershedMap\_WQMStations\_11x17\_2016.mxd exported by:acoplin On 1/20/2017



**Sampling Parameters:**  
 E = Event Flow Water Chemistry  
 B = Baseflow Water Chemistry  
 M = Macroinvertebrate Biomonitoring  
 T = Continuous Temperature Sampling (Start April 2015)  
 S = Substrate Sampling